

## LIGHT WEIGHT JACKET / WITH LINING

### The windbreaker with lining

**OUT:** 100% nylon taffeta  
**IN:** Body lining: 100% polyester mesh  
 Sleeve lining: 100% polyester taffeta

S - M - L - XL - 2XL - 3XL\*

5 pcs/pack & 30 pcs/carton

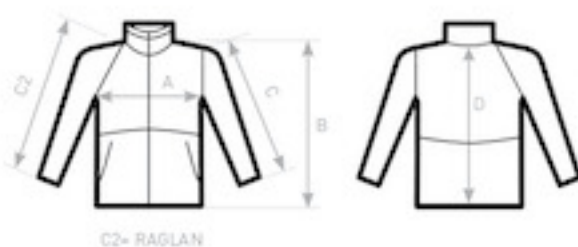
\* ONLY AVAILABLE IN BLACK, NAVY AND RED



\* COLOURS AVAILABLE IN 3XL

- Windproof
- Showerproof
- Water-repellent

- Adjustable storm hood concealed in collar
- Standing collar for great protection
- Front zip opening with zip pull
- Elasticated cuffs
- Adjustable bottom hem with drawcord
- 2 front pockets with zips
- Fold-away jacket (K-Way® system) in right pocket with double slider zip



### SIZES [CM]

B&C AIR JU 801	XS	S	M	L	XL	2XL	3XL
A HALF CHEST	-	59	64	69	74	79	84
B BODY LENGTH FROM NECK POINT	-	72	75	78	81	84	87
C SLEEVE LENGTH	-	55,5	57	58,5	60	61,5	63
D CENTER BACK LENGTH	-	71	74	77	80	83	86

**OUTER WEAR /UNIT**